



□474-0036

□□□□□□□□□□5□128

TEL☐0562-43-9777

FAX ☐ 0562-43-9778

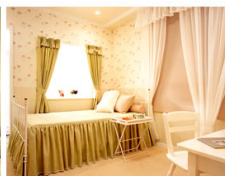
Yahoo!

A diagram of a 4-bit shift register. It consists of four rectangular blocks representing flip-flops, connected in a chain. The first flip-flop has an input labeled 'A' and an output labeled 'A'. The second flip-flop has an input labeled 'B' and an output labeled 'B'. The third flip-flop has an input labeled 'C' and an output labeled 'C'. The fourth flip-flop has an input labeled 'D' and an output labeled 'D'. Arrows indicate the data flow from the output of one flip-flop to the input of the next.

□□□□□□□□□□□□□□□□(□□)□□□□□□□□  
□□□□□□□□□□□□□□□□□□□□□□□□□□□□

© 2004

□ □ □ □ □ □ □ □ □



10/10/2020

[illegible]

□ □ □ □ □ □ □ □ □ □ □ □ □ □ □ □ □ □ □ □

□ □ □ □ □ □ □ □ □ □ □ □

□ □ □ □ □ □ □

□ □ □ □ □ □ □ □ □ □ □ □

[illegible]

✱ □

\* □□□□□□□□□□□□□□□□

□ □ □ □ □ □ □ □ □ □ □ □ □ □ □ □



□ □



□ □

[illegible]



□□□□□□□□  
□□  
□□□□  
□□□□□□□□  
□□□□□□□□  
□□□□□□□□

ura